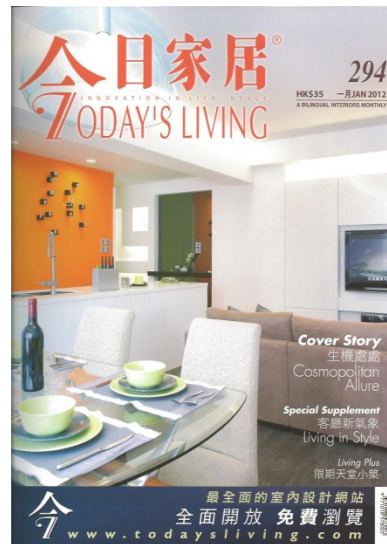


IP Interiors



The Beverly Hills, featured in
Today's living 今日家居
Jan 2012

www.ipinteriors.com

Ip Interiors Ltd. 業 室內設計有限公司

Office 2003, 20/F, Keen Hung Commercial Building, 80 Queen's Road East, Hong Kong

P 852.2399.0508 F 852.3583.2623



遠離都市塵囂

Deep Space

有見這居室坐擁怡人景色，設計師遂以簡約的手筆佈置一室，使自然氣息穿梭於居室之中，令屋主縱然足不出戶，亦可享受度假般的寫意氛圍。

Marked by a distinct spatial liberation and panoramic views of the sea, the massive area of this home was made more impressive than it already was with an all-new design scheme.



Text by Adrian Ho & Billy Clarke
Interior design by Design team / Ip Interiors Ltd.
Photography by Irio-photo

IP Interiors

這四層居室位處大埔，室外盡是怡人綠意和漁村風光，教人心曠神怡。因此，設計師只以簡約手筆妝點一室，同時活用素雅的主色調，把怡人景致引入室內，使自然氣息穿梭於居室之中，賦予一室舒心的氛圍。

素雅佈置 簡約中見特色

從底層的車房走進居室，便見一盞晶瑩剔透的特色吊燈從高曠的天花垂下，予人瑰麗大方的第一印象。沿樓梯拾級而上，只見一樓的客、飯兩廳同以素雅色調妝點，絲毫不覺咄咄迫人的堂皇格調，一室顯得敞亮寫意。客廳毗連寬敞的露台，其落地玻璃為室內引進明媚陽光，注入盈盈暖意。客廳傢具線條利落，統一色調中見豐富層次，加上多元用料營造出多變的

質感，設計顯得簡約有致。沙發後的空間則放置了鋼琴與古箏，方便屋主閒時演練樂器之餘，亦賦予一室濃厚的休閒氣息。另一邊廂，飯廳亦貫徹簡練的設計風格，以皮製餐椅和雲石餐檯點染出淡淡的貴氣。

居室的二樓則為孩子的小天地。

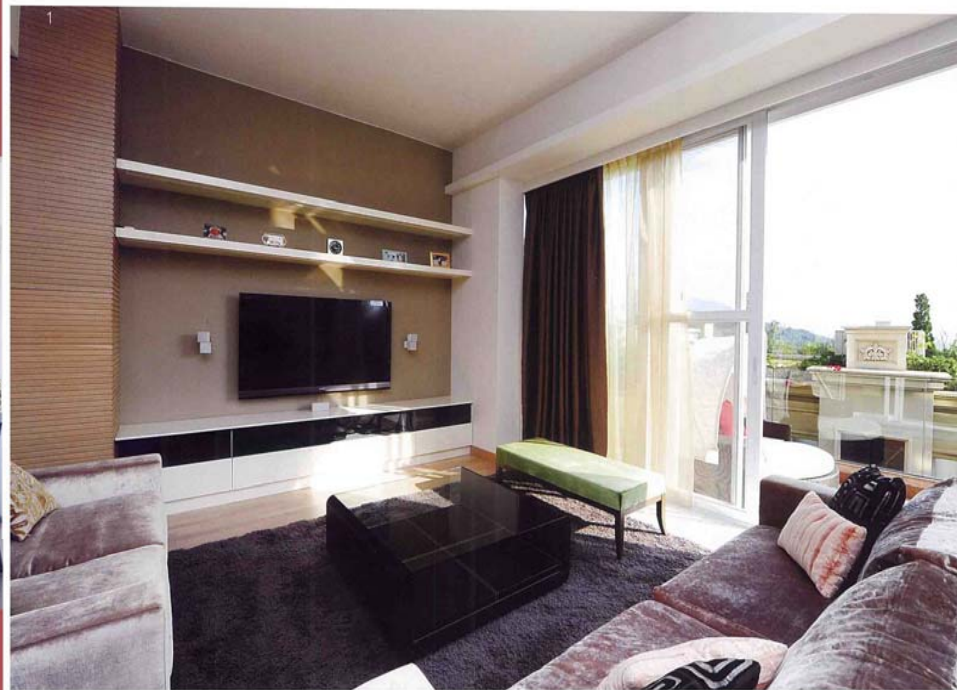
設計師在此特設一寬闊的玩樂間，並以明亮的色調啟發孩子的想像力，一室佈置充滿童趣。孩子的睡房則以其最愛的「小熊維尼」作主題，以維尼的主題顏色妝點，加上設計簡潔的衣櫃和富卡通味道的花形吊燈，美觀之餘亦見實用。

怡人景觀 營造度假氣息

主人房位處孩子房之上，室內以淺淡的暖色調襯以深色的木傢具，營造出愜意的深淺對比，加上落地玻璃

帶來充裕日光與怡人景致，令一室設計有如酒店套房般舒適，予人正在外遊度假的錯覺。除了敞亮的寢區外，設計師亦拆掉了房間原有的牆身，把空間改為長形的衣帽間和梳妝台；兩者以灰玻璃區隔，既可保持衣帽間的私隱，亦為室內添上時尚的氣息。

踏上居室的天台，開揚的海景隨即映入眼簾，漁村風光亦盡收眼底，令人忘掉都市的塵囂。設計師在此特意加設一組戶外傢具和L形工作檯，方便屋主在此舉行派對和燒烤聚會。另一方面，得悉屋主對園藝深感興趣，設計師亦於天台設一玻璃圍欄，以點點綠意點綴優悠的空間，同時滿足屋主的喜好。



1&2/ 客廳的落地玻璃為室內引進明媚陽光，映照一室素雅的淡棕色調，顯得緩和怡人。

Predominant white tones run across the living area with spots of beige, brown and black highlights cropping up on the furniture, flooring and behind the television.

3/ 客廳色調雖然統一，當中卻見豐富層次，加上多元用料營造出多變的質感，予人簡約有致之感。樓梯改設觀感通透的玻璃護欄，使一室空間感更豐。

Highlights in the lounge area include the grey fluffy carpet underpinning everything in the seating area, a black glass-topped coffee table and some comfortably-covered seats.

多樂士建議顏色：
Council Bluff 90YR 43/101



2



2



3



1&2/ 兩廳之間以樓梯相隔，予人層次分明之感。設計艷麗的飯廳置有皮製餐椅和寶石餐檯，低調地為一室添上貴氣。

Though fairly simple, the dining area still has plenty of splendour about it, with crystals hanging from a rectangular chandelier, a television placed on the wall and a marble table.

3/ 孩子的睡房以其最愛的「小熊維尼」作主題，並繫上維尼的主題顏色。房間的衣櫃設計簡潔，並設簡單的花形吊燈點綴。

Yellow walls and a flowery light fixture complement a yellowish 'Winnie the Pooh' bed in the bedroom.

4/ 居室擁有怡人景觀；身處天台時，漁村風光盡收眼底。設計師特意加設一組戶外傢具和L形工作檯，方便屋主在此舉行派對和燒烤聚會。此外，設計師亦於天台設一玻璃圍欄，使天台更富自然氣息。

There is a private rooftop crowning the home, and this space was enhanced with a new L-shaped weather-resistant counter unit for hosting barbecues, plus stylish outdoor furniture and a small tiled area.

多樂士建議牆色：
Warm Gold 35YY 59/533



IP Interiors

由於拍攝燈光與印刷技術的限制，相片中的牆壁顏色與現場顏色可能有偏差，讀者如對文中建議的牆色有興趣，敬請參考多樂士CP4調色版以資比較。

多樂士建議牆色：
Delft China 79BG 53/259



First Floor 一樓



Second Floor 二樓



Third Floor 三樓



Fourth Floor 四樓

Information

Location: The Beverly Hills (比華利山)
Size: 4,331 sq. ft.

Suppliers

Living & Dining Area

Sofa & TV cabinet: Ip Interiors Ltd.
Pendant lamp in dining area: Eurolux Co., Ltd.
Table lamp in living area: PLC
Recessed lights: Zodiac Lighting Limited
Wall lamps: Artemide Ltd.
TV: Sony
Hi-fi: Bose

Master Bedroom

Bed & cabinets: Ip Interiors Ltd.
Carpet: Yarns Limited
Floor lamp: Artemide Ltd.
TV lift: Soundtronics Ltd.

Daughter's Room

Bed: Art Deco Furniture Collection Limited
Cabinet: Ip Interiors Ltd.
Lighting: Philips

With 4,331 square-feet spread across four floors and views from every story with even a roof to boot, this Tai Po home was already exceptional, but the owners wanted to make it even more suitable for their lifestyle and small family. The design team from Ip Interiors Limited was consequently called in to perform their interior design magic and they added modish and warm touches throughout, whilst also making the most of the natural light and open spaces.

The entrance leads to the living room area on the ground floor which is shared between a simple dining area and a lounge. The areas are segmented by steps in the

middle of the room which also bring more depth and layers to the space. Predominant white tones run across both areas with spots of beige, brown and black highlights cropping up on the furniture, flooring and behind the television. Though fairly simple, the dining area still has plenty of splendour about it, with crystals hanging from a rectangular chandelier, a television placed on the wall and a marble table. A classical-looking door leading to the kitchen also brings natural light to the area through its eight square panes. Things are still simple in the lounge area opposite, but less so than the dining area. Making use of the same colour scheme, the seating area

of lounge has a fairly typical setup, but the difference is in the materials and the music corner at the back complete with a dominant black grand piano. Aside from the black piano, highlights in this area include the grey fluffy carpet underpinning everything in the seating area, a black glass-topped coffee table and some comfortably-covered seats. The balcony of course is a centrepiece in itself as well, and in the renovation this area was enhanced with tiled flooring and rattan furniture.

The stairs leading to the upper floors of the home were framed with glass barriers and this averts clutter. In addition some safety fences were



installed for the protection of the child of the home. The child also has an exclusive play area and a personal bedroom. High spots in these two openly-spaced areas include a padded windowsill and rubber mats in the play area, plus yellow walls and a flowery light fixture that complement a yellowish 'Winnie the Pooh' bed in the bedroom. A sense of spatial openness also marks the master bedroom as well, which also features a newly-installed ensuite walk-in closet and make-up area partitioned off from the room via dark-tinted glass. Apart from the large full-height window which brings in stunning views, central elements of the master bedroom

include a concealed automated television unit hidden within the cabinet at the base of the bed, plus matching neoclassical bedside lights and a low-slung bed made of the same velvety materials as the seating in the ground floor lounge. There is also a private rooftop crowning the home, and this space was enhanced with a new L-shaped weather-resistant counter unit for hosting barbeques, plus stylish outdoor furniture and a small tiled area. Other key parts of the home include the kitchen and bathrooms (left untouched from the developer's original treatment); a basic study complete with individually-illuminated shelves; and a special

globular designer chandelier made from a web of crystals off from the parking space. ↗

- 1/ 居室的二樓特意為孩子設一玩樂間，以明亮色調發孩子的想像力，一室佈置充滿童趣。
High spots in the openly-spaced play area include a padded windowsill and rubber mats.
- 2/ 拆去原有牆身後，設計師善用空間設置長形的衣櫃間，並以灰玻璃區隔，既可保持私隱，亦增添了時尚氣息。
This is the view from one side of the master bedroom, where a dark-tinted glass partition conceals the space of the walk-in closet.
- 3/ 設計師於主人房以較淺的暖色調襯以深色的木傢具，營造出愜意的深淺對比。
Central elements of the master bedroom include a concealed automated television unit hidden within the cabinet at the base of the bed, plus matching neoclassical bedside lights and a low-slung bed made of the same velvety materials as the seating in the ground floor lounge.